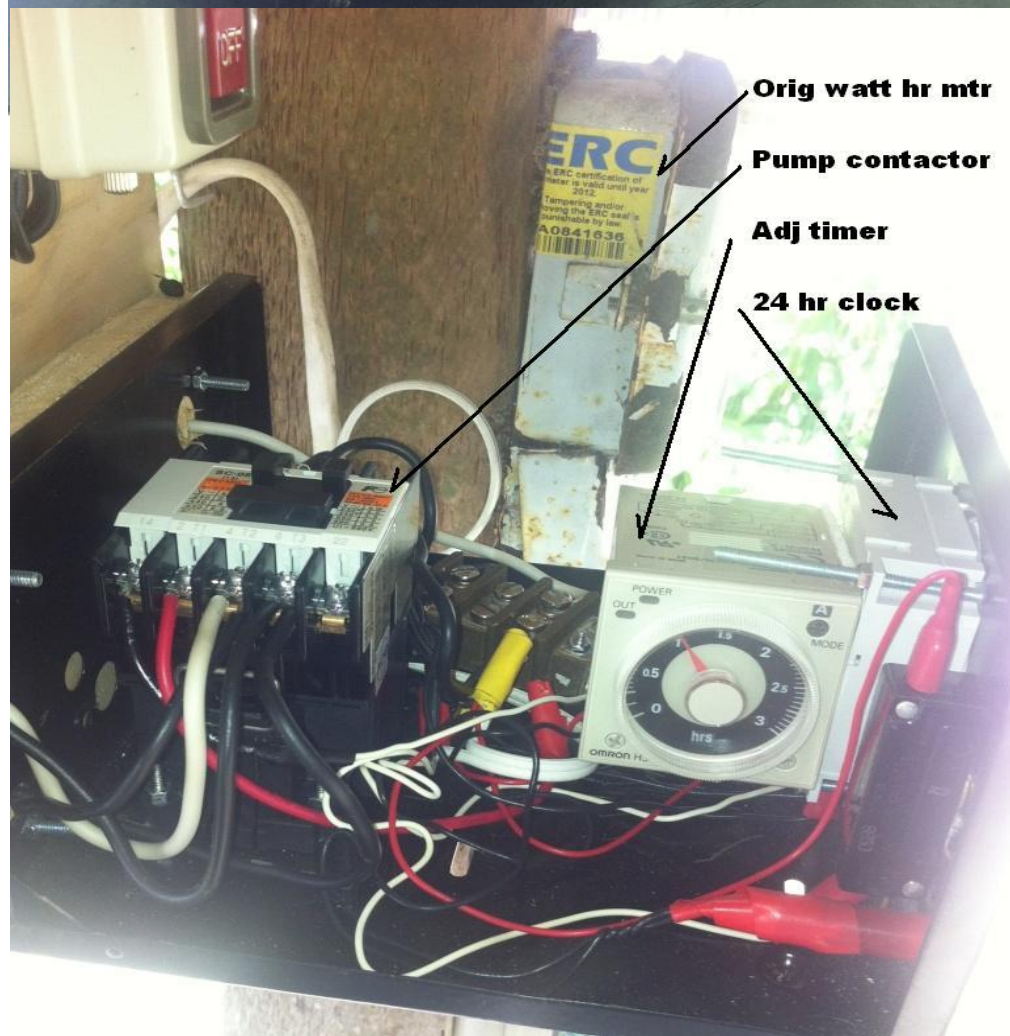
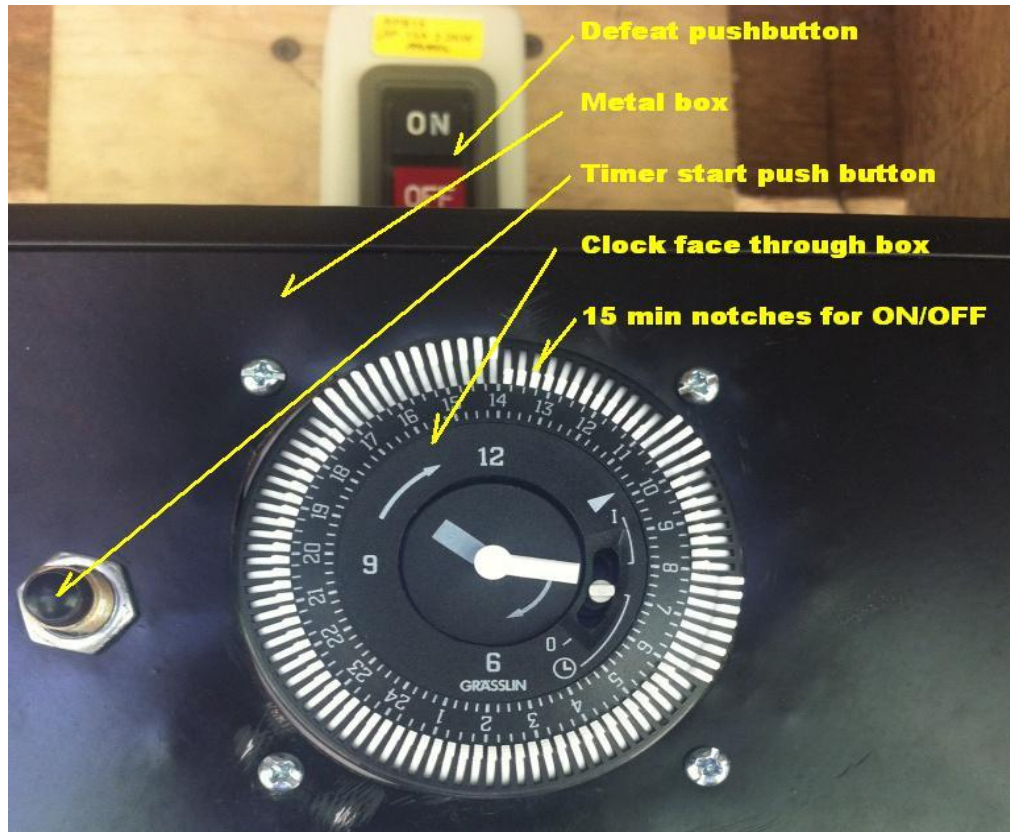


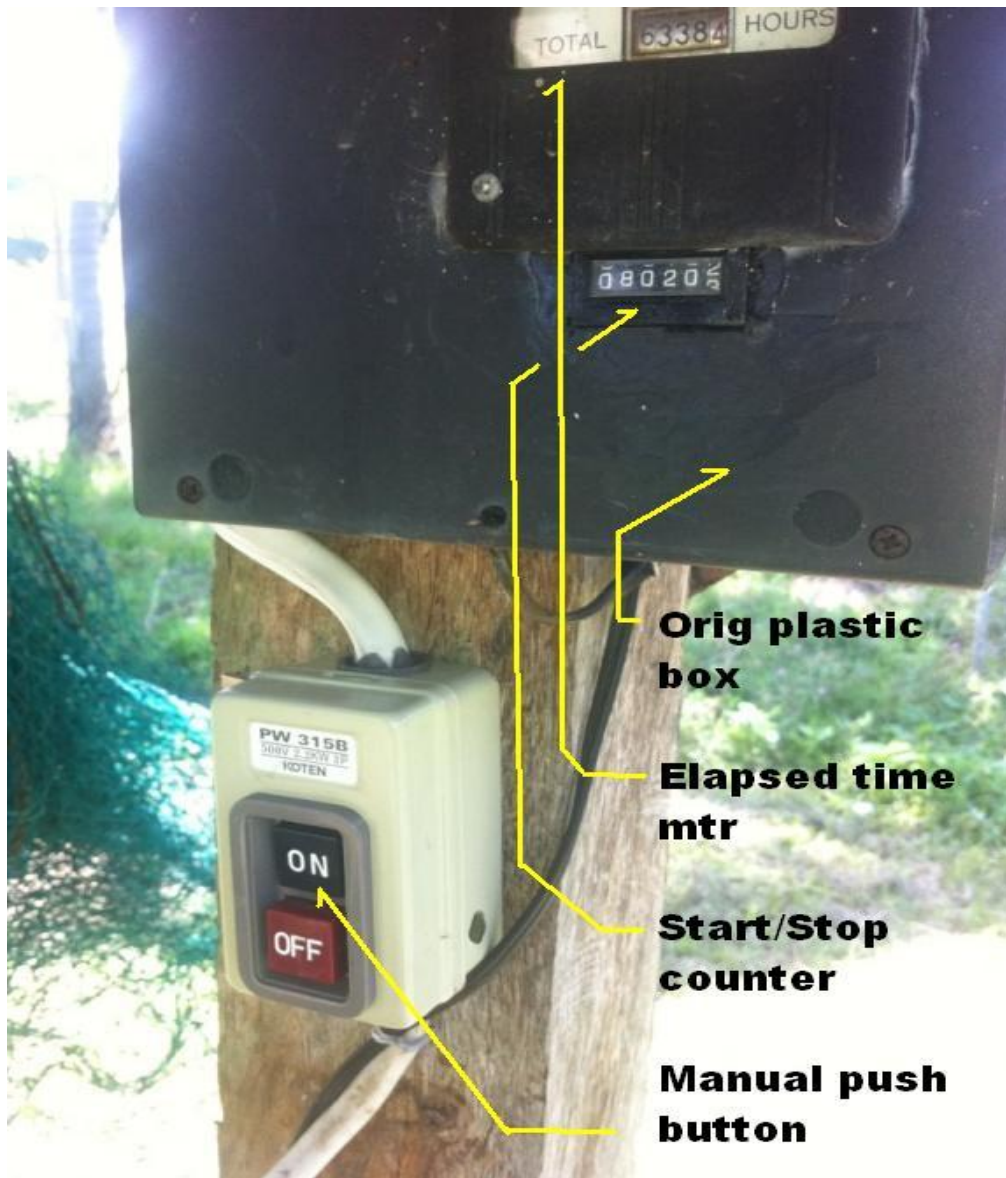
Rationale:

On the farm, there are 2 sets of operators who use water. They are supposed to start and stop the pump by manual pushbutton when they need to wash the cows and water the veggie plots. But they tend to forget to put off pump, except at night when they drain the tank. During the day, leaks in pipes cause pump to run unnecessarily, so average run time is 8-10 hours (depending on weather), when it should only run 5 hours at the most.

This additional circuitry will avoid all that. Pump will be programmed to run only at specific times. If any operator needs more time, he will start pump via pushbutton for an extra hour, to be repeated as necessary. One operator is trained to adjust the 24 hr clock to true time after a brownout.



Above, front view of new control box. Below, inside control box.



Left photo:

Overall view of pump house, with orange pressure tank, light blue electric pump, watt-hour meter on top right, two black control boxes, and two push-button stations.

Blue can with hose is seldom used water reservoir for easy pump priming.

Green bundle is fish net.