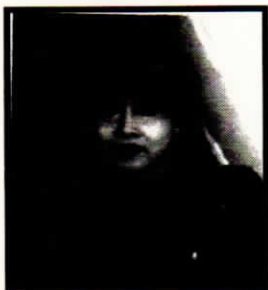


Greetings from:

MARLENE Z. ROBERTSON
GROUP OF COMPANIES

- GOLDEN CROSS HEALTH CARE, Pasadena, CA
- GOLDEN CROSS HEALTH CARE, Fresno, CA
- CLOVERLEAF HEALTH CARE, Hemet, CA
- GOOD SHEPHERD CONVALESCENT, Lakeview Terrace, CA
- SAN MARINO HOME NURSING SERVICES, Pasadena, CA
- INTERNATIONAL HEALTH CARE MANAGEMENT & CONSULTING, San Marino, CA
- ALTEN-UND PFLEGEHEIM HOELDERLIN, Hamburg, Germany
- DAYTONA TOTAL CONCEPTS, Torrance, CA
- * *Huntington Health Care - LA*

Marlene Z. Robertson, RN, NHA
Pres & CEO



Tel. (626) 945-6431
Fax (626) 585-5488

EMail: mayen1@aol.com